

CITY OF LAFAYETTE SEWER SYSTEM IMPROVEMENTS SHATTUCK INDUSTRIAL BLVD FORCEMAIN REPLACEMENT

LAFAYETTE, GEORGIA

ANDY ARNOLD, MAYOR

BEACHER GARMANY, COUNCIL WARD 1

BEN BRADFORD, COUNCIL WARD 2

JUDY MEEKS, COUNCIL WARD 3

CHRIS DAVIS, COUNCIL WARD 4

WAYNE SWANSON, COUNCIL MEMBER AT LARGE

DAVID HAMILTON, City Manager

JIM SPEIR, Director of Utilities

WALLY MEEKS, Director of Water & Sewer

EROSION CONTROL PLANS



ENGINEER'S PROJECT NO.126-143

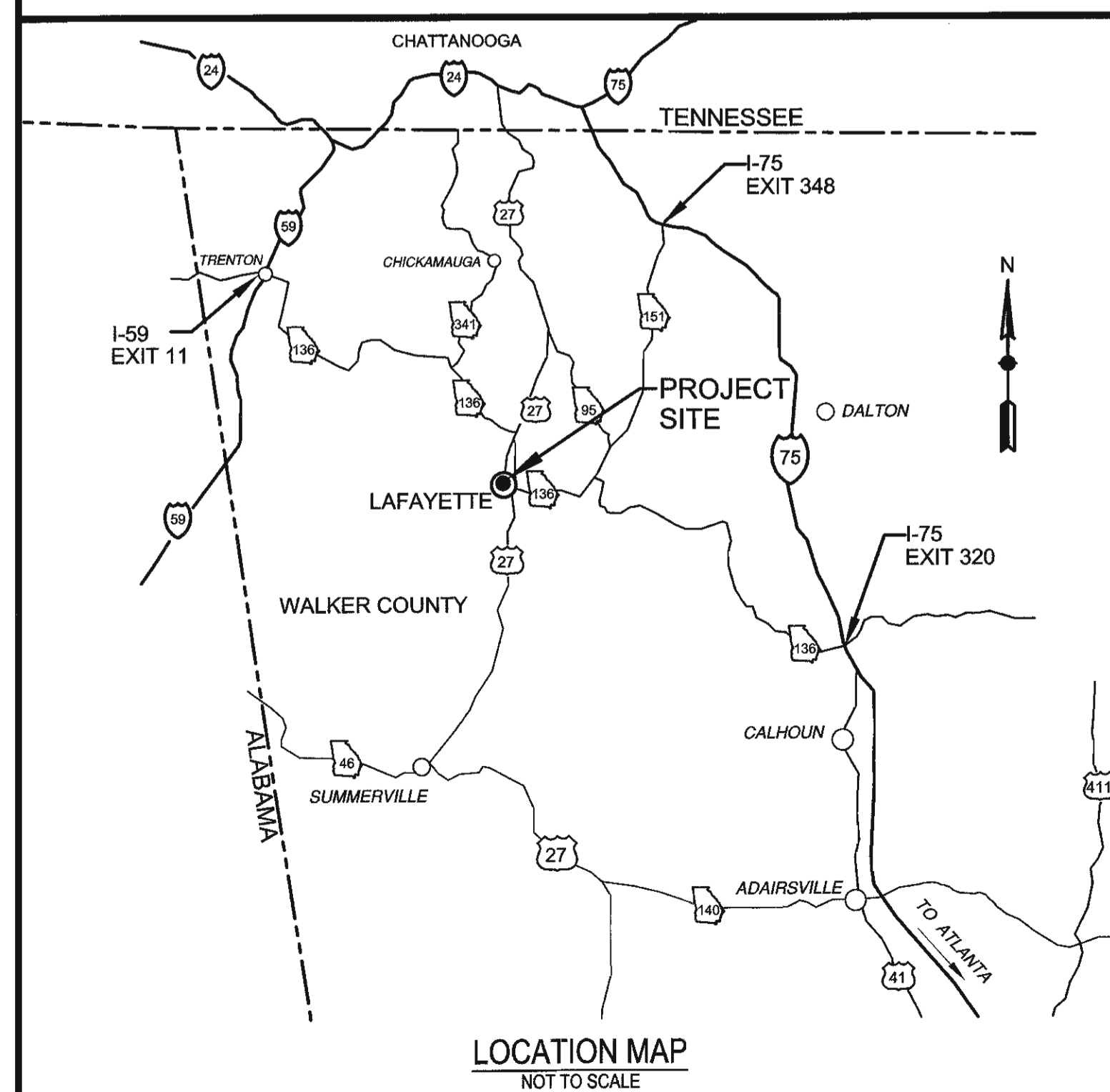
AUGUST 10, 2017



TRENT R. LARD, P.E.
ENGINEER OF RECORD

SWEITZER ENGINEERING, INC.
CONSULTING ENGINEERS

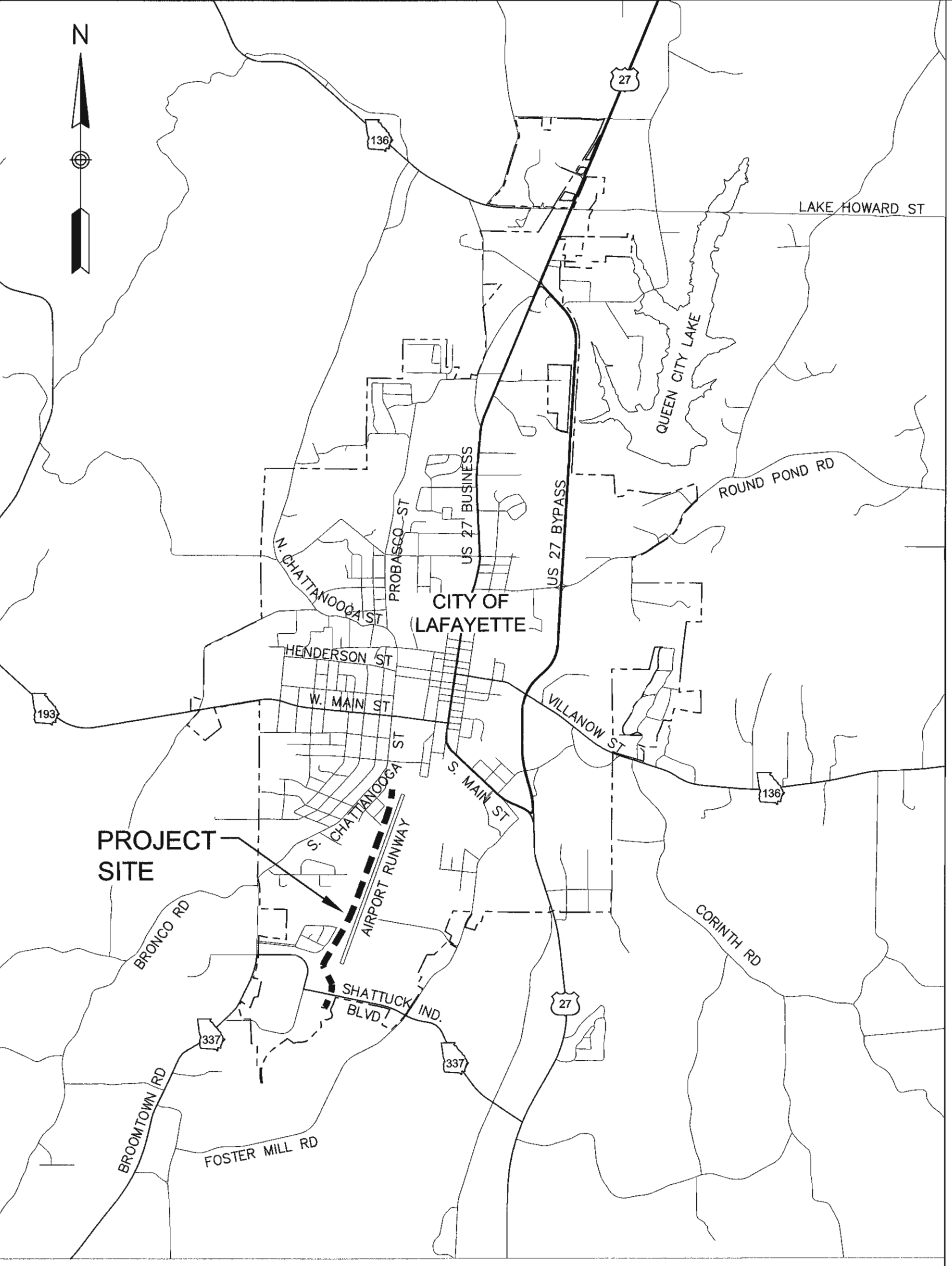
© SWEITZER ENGINEERING, INC. 2017



SHEET INDEX	
SHEET NO.	SHEET TITLE
-	COVER SHEET & SHEET INDEX
02	GENERAL NOTES
03	PROJECT MAP
04	PLAN & PROFILE
05	PLAN & PROFILE
06	PLAN & PROFILE
07	PLAN & PROFILE
08	PLAN & PROFILE
09	CROSSING DETAILS
10	FORCEMAIN DETAILS
11	EROSION & SEDIMENT CONTROL PLAN MAP
12	EROSION & SEDIMENT CONTROL PLAN NOTES
13	EROSION & SEDIMENT CONTROL PLAN DETAILS
14	EROSION, SEDIMENTATION, & POLLUTION CONTROL PLAN
	SEQUENCE 1 OF 14 PROJECT NO. 126-143

ABBREVIATIONS
(APPLICABLE TO ALL SHEETS)

AC	ASBESTOS CEMENT	MAX	MAXIMUM
AFG	ABOVE FINISH GRADE	MB	MAILBOX
APPROX	APPROXIMATE	MFR	MANUFACTURER
ARV	AIR RELEASE VALVE	MH	MANHOLE
ASPH	ASPHALT	MIN	MINIMUM
ASSY	ASSEMBLY	MISC	MISCELLANEOUS
AVE	AVENUE	MJ	MECHANICAL JOINT
AWWA	AMERICAN WATER WORKS ASSOCIATION	MON	MONUMENT
BC	BACK OF CURB	N	NORTH
BFV	BUTTERFLY VALVE	N/F	NOW OR FORMERLY
BLDG	BUILDING	NIC	NOT IN CONTRACT
BM	BENCHMARK	NO.	NUMBER
BO	BLOWOFF	NTS	NOT TO SCALE
BOT	BOTTOM	O.C.	ON CENTER
BV	BALL VALVE	O.D.	OUTSIDE DIMENSION
C&G	CURB & GUTTER	OHP	OVERHEAD POWER LINE
CB	CATCH BASIN	OHT	OVERHEAD TELEPHONE LINE
CI	CAST IRON PIPE	PL	PROPERTY LINE
CL OR C	CENTERLINE	PP	POWER POLE
CMP	CORRUGATED METAL PIPE	PRV	PRESSURE REDUCING VALVE
CO	CLEANOUT	PSF	POUNDS PER SQUARE FOOT
CONC.	CONCRETE	PSI	POUNDS PER SQUARE INCH
CU YD	CUBIC YARD	PVC	POLYVINYL CHLORIDE (PLASTIC)
DA	DRAINAGE AREA	RCP	REINFORCED CONCRETE PIPE
DIA	DIAMETER	REBAR	REINFORCING STEEL BAR
DIP	DUCTILE IRON PIPE	RED	REDUCER
DOT	DEPARTMENT OF TRANSPORTATION	REINF	REINFORCING
E	EAST	RJ	RESTRAINED JOINT
EA	EACH	RD	ROAD
ECC.	ECCENTRIC	REQ'D	REQUIRED
EL	ELEVATION	RW	RIGHT-OF-WAY
EOP	EDGE OF PAVEMENT	RT	RIGHT
EQ	EQUAL	S	SOUTH
E.W.	EACH WAY	SCH	SCHEDULE
EX.	EXISTING	SD	STORM DRAIN
EXP. JT.	EXPANSION JOINT	SHT	SHEET
EX.	EXISTING	SHT	SHEET
FIN GR	FINISH GRADE	SHT	SHEET
FLG	FLANGED	SQ	SPECIFICATION
FO	FIBER OPTIC	SQ	SQUARE
FT	FEET	SR	STATE ROUTE
GALV	GALVANIZED	SS	SANITARY SEWER
G OR NG	NATURAL GAS	ST	STREET
GP	GUY POLE	STA	STATION
GRVL	GRAVEL	STD	STANDARD
GR	GRADE	ST STL	STAINLESS STEEL
GV	GATE VALVE	SW	SIDEWALK
HDPE	HIGH DENSITY POLYETHYLENE	SY	SQUARE YARD
HGT	HEIGHT	TBM	TEMPORARY BENCHMARK
HORIZ	HORIZONTAL	TOP	TOP OF PIPE
HWY	HIGHWAY	TP	TELEPHONE POLE
HP	HIGH PRESSURE	TYP	TYPICAL
ID	INSIDE DIMENSION	UGT	UNDERGROUND TELEPHONE LINE
INV	INVERT	U.N.O.	UNLESS NOTED OTHERWISE
IPF	IRON PIN FOUND	VERT	VERTICAL
JT	JOINT	WL	WATER LINE
LF	LINEAR FEET	W/	WITH
LIN	LINEAR, LINEAL	W/O	WITHOUT
LG	LONG	WM	WATER METER
LT	LEFT	WWF	WELDED WIRE FABRIC



VICINITY MAP
SCALE: 1" = 3000'±

UTILITY OWNER CONTACTS

1. WATER & SEWER: CITY OF LAFAYETTE WATER AND SEWER DEPARTMENT
CONTACT: JEFF HOWELL, DISTRIBUTION SYSTEM SUPERVISOR
OFFICE: (706) 639-1563
MOBILE: (423) 443-9081
2. ELECTRICITY: CITY OF LAFAYETTE ELECTRIC DEPARTMENT
CONTACT: MIKE STEWART
OFFICE: 706-639-1510
3. TELEPHONE: BATTLEFIELD CABLE
CONTACT: (706) 931-2212
4. GAS: CITY OF LAFAYETTE GAS DEPARTMENT
CONTACT: CLIFFORD SYNDER
OFFICE: (706) 639-1511
5. AIRPORT UTILITIES: BARWICK - LAFAYETTE AIRPORT
(RUNWAY LIGHTS, NAVIGATION AIDS, ETC)
CONTACT: TODD LANDRY (AIRPORT MANAGER)
OFFICE: (706) 638-7071

GENERAL NOTES
(APPLICABLE TO ALL SHEETS)

1. THESE DRAWINGS, AS AN INSTRUMENT OF SERVICE, WERE PREPARED FOR THE EXCLUSIVE USE OF THE CLIENT NAMED HEREON. NO WARRANTY, EXPRESSED OR IMPLIED, IS INTENDED TO ANY UNNAMED THIRD PARTY. THE DRAWINGS AND ANY ANY COPIES THEREOF, REMAIN THE PROPERTY OF SWEITZER ENGINEERING, INC. THESE DRAWINGS ARE COPYRIGHTED AND SHALL NOT BE REPRODUCED OR COPIED IN WHOLE OR IN PART WITHOUT THE WRITTEN PERMISSION OF SWEITZER ENGINEERING, INC.
2. PROPERTY AND RIGHT-OF-WAY INFORMATION SHOWN HEREON IS APPROXIMATE, INTENDED ONLY FOR GENERAL INFORMATION. DO NOT USE FOR RECORDING, CONVEYANCE, OR SALES.
3. PERSONS USING THESE DRAWINGS SHALL MAKE THEIR OWN DETERMINATION OF THE LOCATION, DEPTH, AND DESCRIPTION OF UNDERGROUND AND OVERHEAD UTILITIES. THE UTILITY LOCATION INFORMATION SHOWN ON DRAWINGS WAS OBTAINED FROM READILY AVAILABLE SOURCES BELIEVED TO BE RELIABLE, BUT IT MAY NOT BE ACCURATE OR COMPLETE. EXCAVATION AND ELECTRONIC DETECTION METHODS WERE NOT USED TO VERIFY THE SUBSURFACE INFORMATION.
4. THERE MAY BE WATER, NATURAL GAS, POWER LINES AND OTHER UTILITIES AND SERVICE LATERALS THAT ARE NOT SHOWN ON THE DRAWINGS. CALL UTILITIES PROTECTION CENTER FOR UTILITY LOCATION BEFORE BEGINNING ANY EXCAVATION ACTIVITY AND COORDINATE WITH APPLICABLE UTILITY COMPANY FOR RELOCATIONS, REPLACEMENTS, OR OTHER RESOLUTION OF CONFLICT WITH EXISTING UTILITIES.

CONSTRUCTION NOTES
(APPLICABLE TO ALL SHEETS)

1. COMPLY WITH THE REQUIREMENTS OF APPLICABLE UTILITY ENCROACHMENT PERMITS WHEN WORKING ON RIGHT-OF-WAYS OF THE CITY OF LAFAYETTE ROAD DEPARTMENT OR GEORGIA DEPARTMENT OF TRANSPORTATION.
2. NOTIFY AIRPORT MANAGER 3 BUSINESS DAYS BEFORE WORKING ON AIRPORT PROPERTY.
3. INSTALL PIPES, VALVES, HYDRANTS AND AIR RELEASE VALVES AT LOCATIONS SHOWN OR AS DIRECTED BY OWNER'S REPRESENTATIVE.
4. IF NECESSARY, INCREASE OR DECREASE THE DEPTH OF WATER MAINS BY JOINT DEFLECTION. DO NOT EXCEED 85% OF MANUFACTURER'S RECOMMENDED DEFLECTION PER JOINT. DO NOT INSTALL BENDS UNLESS SHOWN ON DRAWINGS OR APPROVED BY ENGINEER.
5. INSTALL PIPE WITH A MINIMUM COVER OF 42 INCHES BELOW GRADE OR BELOW ROAD CENTERLINE UNLESS OTHERWISE NOTED ON PLANS OR SPECIFIED.

EROSION & SEDIMENT CONTROL NOTES
(APPLICABLE TO ALL SHEETS)

- OWNER: CITY OF LAFAYETTE
207 SOUTH DUKE STREET (PO BOX 89)
LAFAYETTE, GEORGIA 30728
- 24 HOUR CONTACT: JEFF HOWELL, DISTRIBUTION SYSTEM SUPERVISOR
OFFICE: (706) 639-1563
MOBILE: (423) 443-9081
1. COMPLY WITH EROSION AND SEDIMENT CONTROL PLAN AND NPDES GENERAL PERMIT FOR CONSTRUCTION ACTIVITY (NOI), IF APPLICABLE.
 2. SEE SHEET 16 FOR EROSION AND SEDIMENT CONTROL DETAILS.
 3. **THE ESCAPE OF SEDIMENT FROM THE SITE SHALL BE PREVENTED BY THE INSTALLATION OF EROSION AND SEDIMENT CONTROL MEASURES AND PRACTICES PRIOR TO, OR CONCURRENT WITH, LAND DISTURBING ACTIVITIES.**
 4. **EROSION CONTROL MEASURES SHALL BE MAINTAINED AT ALL TIMES. IF FULL IMPLEMENTATION OF THE APPROVED PLAN DOES NOT PROVIDE FOR EFFECTIVE EROSION CONTROL, ADDITIONAL EROSION AND SEDIMENT CONTROL MEASURES SHALL BE IMPLEMENTED TO CONTROL OR TREAT THE SEDIMENT SOURCE.**
 5. **PROVIDE MULCH, TEMPORARY VEGETATION, OR PERMANENT VEGETATION ON ALL EXPOSED AREAS WITH SEVEN (7) DAYS AFTER DISTURBANCE.**
 6. **ADDITIONAL EROSION AND SEDIMENT CONTROL MEASURES SHALL BE INSTALLED IF DEEMED NECESSARY BY ON-SITE INSPECTION.**
 7. **THE CONTRACTOR MUST HAVE A LEVEL 1A CERTIFIED PERSON ON SITE AT ALL TIMES DURING CONSTRUCTION.**

© SWEITZER ENGINEERING, INC. 2017

NO.	DATE	ISSUED FOR	BY

THE SCALE BAR SHOWN BELOW MEASURES ONE INCH LONG ON THE ORIGINAL DRAWING.

DESIGNED: JHS
DRAWN: SHS
CHECKED: JHS

SWEITZER ENGINEERING, INC.
CONSULTING ENGINEERS
680 Douthit Ferry Rd, Suite 105
Cartersville, Georgia 30120
678-569-4290 - Phone



CITY OF LAFAYETTE
SEWER SYSTEM IMPROVEMENTS
SHATTUCK INDUSTRIAL BLVD
FORCEMAIN REPLACEMENT

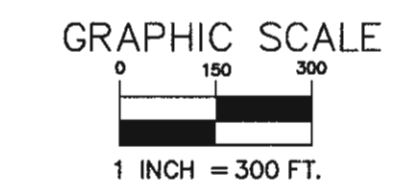
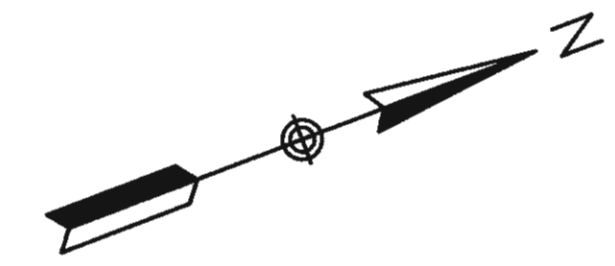


SHEET TITLE: GENERAL NOTES & VICINITY MAP

DATE: AUGUST 10, 2017

SHEET: 02

SEQUENCE 02 OF 14
PROJECT NO. 126-143



T:\126 LAFAYETTE\PROJECTS\143 Forcemain\143 PROJECT MAP.dwg
 Saved: August 10, 2017 1:13 PM
 Plotted: August 24, 2017 1:44 PM

©SWEITZER ENGINEERING, INC. 2017

NO.	DATE	ISSUED FOR	BY

THE SCALE BAR SHOWN BELOW MEASURES ONE INCH LONG ON THE ORIGINAL DRAWING.

DESIGNED: JHS
 DRAWN: SHS
 CHECKED: JHS

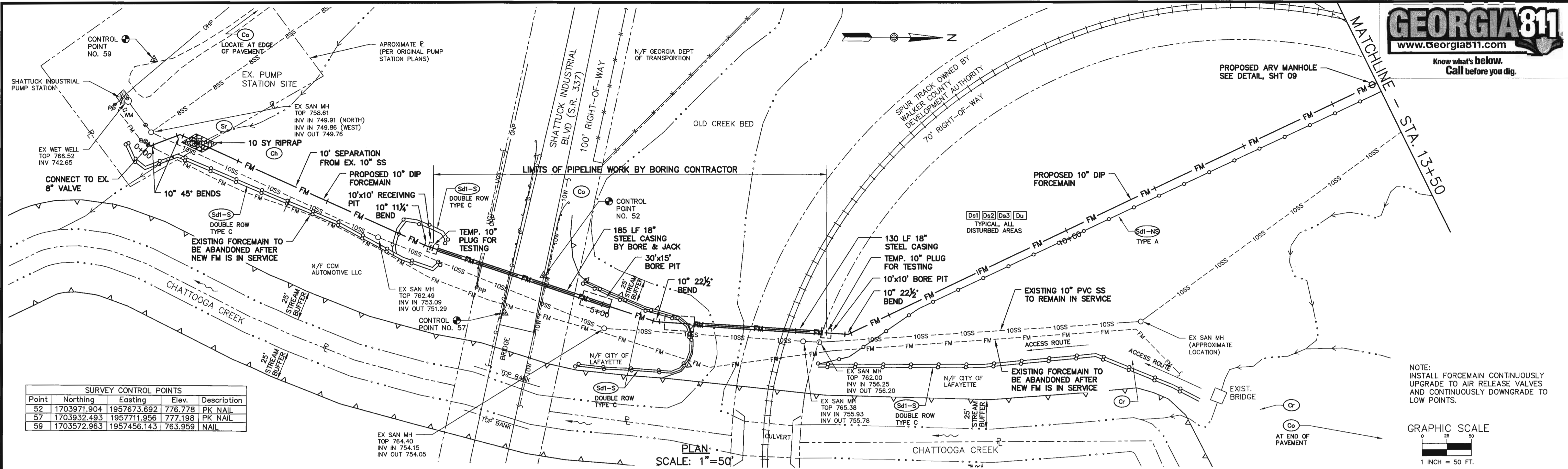
SWEITZER ENGINEERING, INC.
 CONSULTING ENGINEERS
 680 Douthit Ferry Rd, Suite 105
 Cartersville, Georgia 30120
 678-569-4290 - Phone



CITY OF LAFAYETTE, GEORGIA
 SHATTUCK INDUSTRIAL BLVD
 FORCEMAIN REPLACEMENT

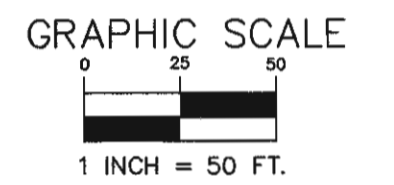
SHEET TITLE
PROJECT MAP

DATE: AUGUST 10, 2017
 SHEET
03
 SEQUENCE 3 OF 14
 PROJECT NO. 126-143

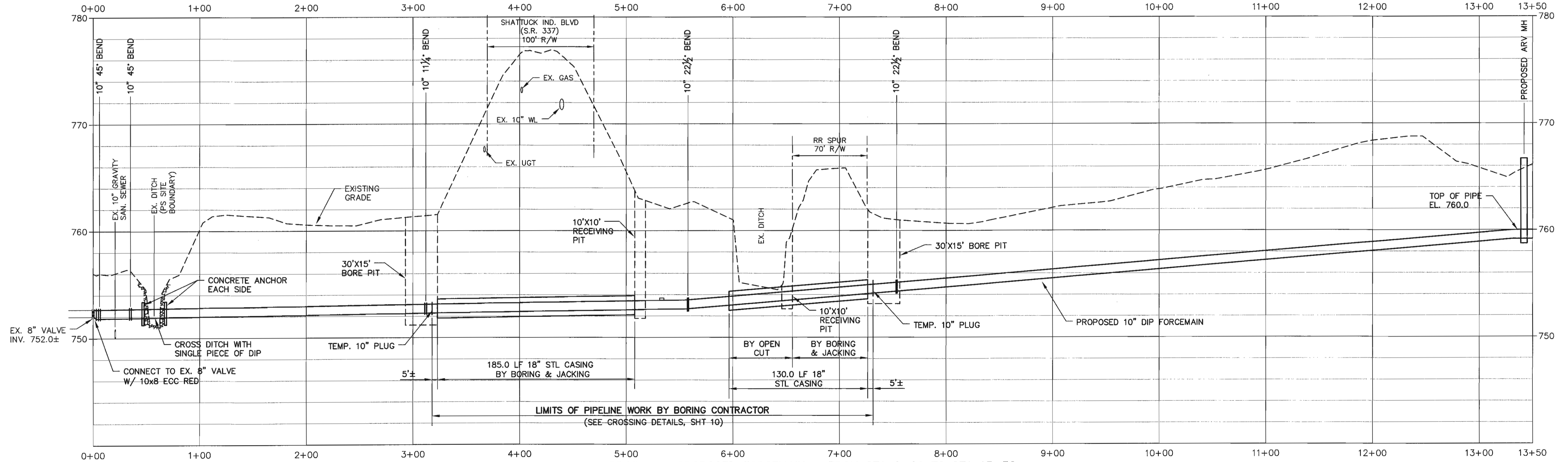


Point	Northing	Easting	Elev.	Description
52	1703971.904	1957673.692	776.778	PK NAIL
57	1703932.493	1957711.956	777.198	PK NAIL
59	1703572.963	1957456.143	763.959	NAIL

NOTE: INSTALL FORCEMAIN CONTINUOUSLY UPGRADE TO AIR RELEASE VALVES AND CONTINUOUSLY DOWNGRADE TO LOW POINTS.



PLAN SCALE: 1" = 50'



PROFILE - PROPOSED FORCEMAIN - FROM STA 0+00 TO STA 13+50
SCALE: 1" = 50' (HORIZ.)
1" = 5' (VERT.)

T:\126 LAFAYETTE\PROJECTS\143 Forcemain\143 CIVIL SHEETS- EXTENDED.dwg
Sheet: October 1, 2018, 3:6 PM
Plotted: October 01, 2018, 3:6 PM

©SWEITZER ENGINEERING, INC. 2017

NO.	DATE	ISSUED FOR	BY
1	10/1/2018	EROSION CONTROL NOTES	TRL

THE SCALE BAR SHOWN BELOW MEASURES ONE INCH LONG ON THE ORIGINAL DRAWING.

DESIGNED: JWC
DRAWN: SHS
CHECKED: JHS

SWEITZER ENGINEERING, INC.
CONSULTING ENGINEERS
680 Douthett Ferry Rd, Suite 105
Cartersville, Georgia 30120
678-569-4290 - Phone

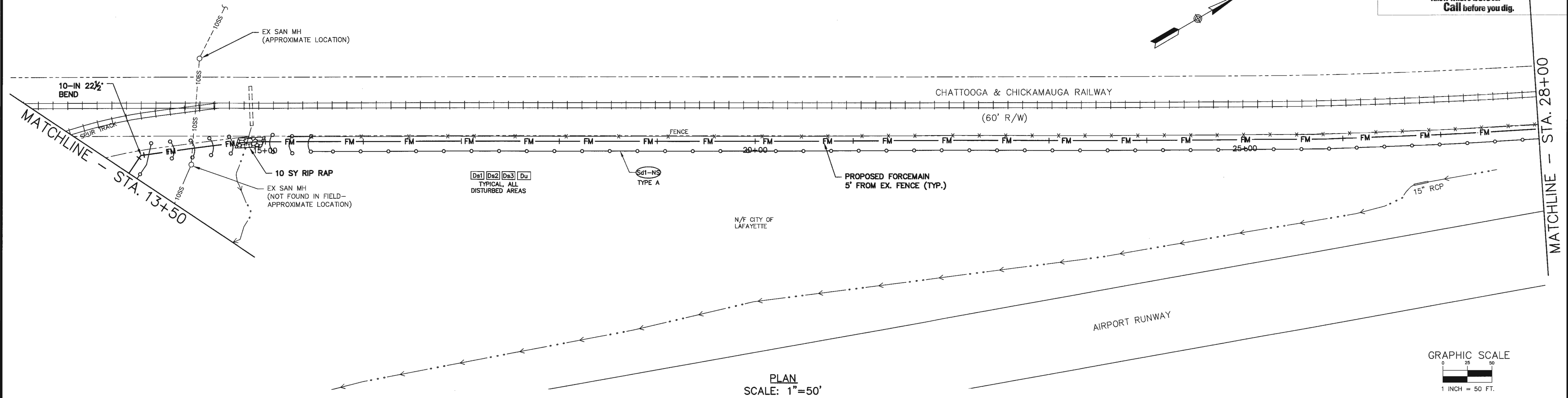
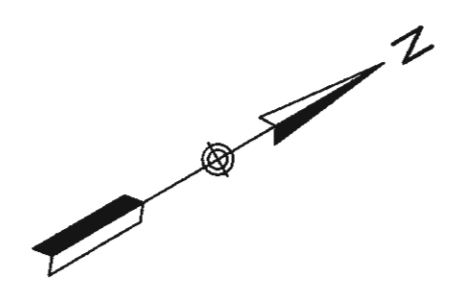


CITY OF LAFAYETTE, GEORGIA
SHATTUCK INDUSTRIAL FORCEMAIN REPLACEMENT

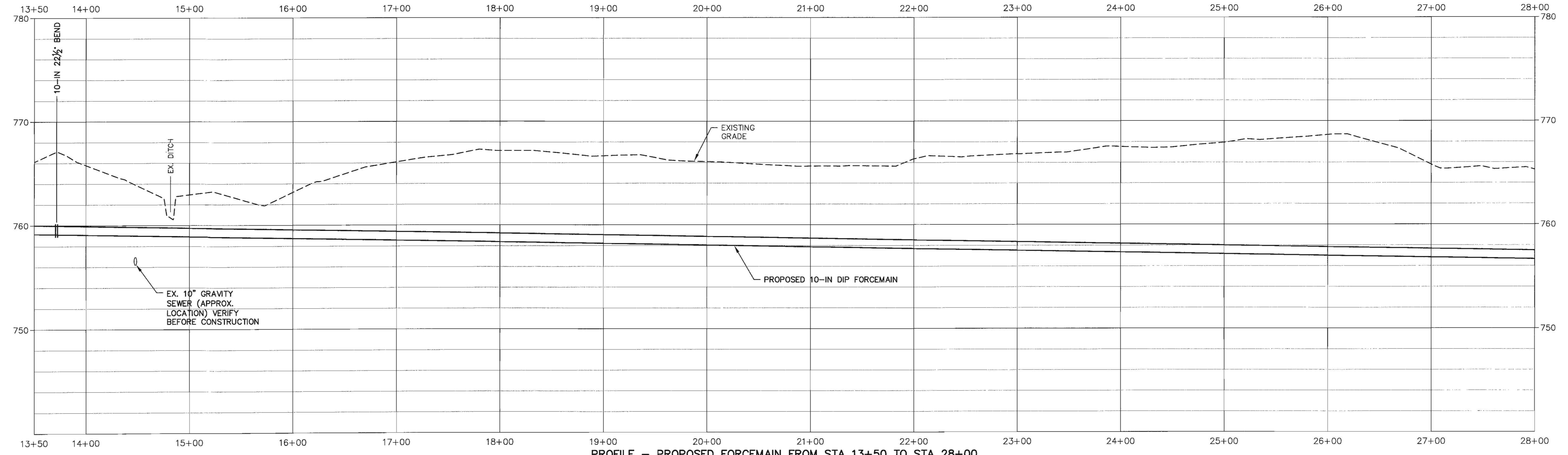
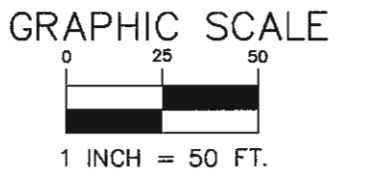


SHEET TITLE
PLAN & PROFILE

DATE: OCTOBER 27, 2017
SHEET
04
SEQUENCE 04 OF 14
PROJECT NO. 126-143B



PLAN
SCALE: 1"=50'



PROFILE - PROPOSED FORCEMAIN FROM STA 13+50 TO STA 28+00
SCALE: 1" = 50' (HORIZ.)
1" = 5' (VERT.)

T:\126 LAFAYETTE\PROJECTS\143 Forcemain\143 CIVIL SHEETS.dwg
Saved: August 22, 2017 8:18 AM
Plotted: August 24, 2017 1:25 PM

©SWEITZER ENGINEERING, INC. 2017

NO.	DATE	ISSUED FOR	BY

THE SCALE BAR SHOWN BELOW MEASURES ONE INCH LONG ON THE ORIGINAL DRAWING.

DESIGNED: JWC
DRAWN: SHS
CHECKED: JHS

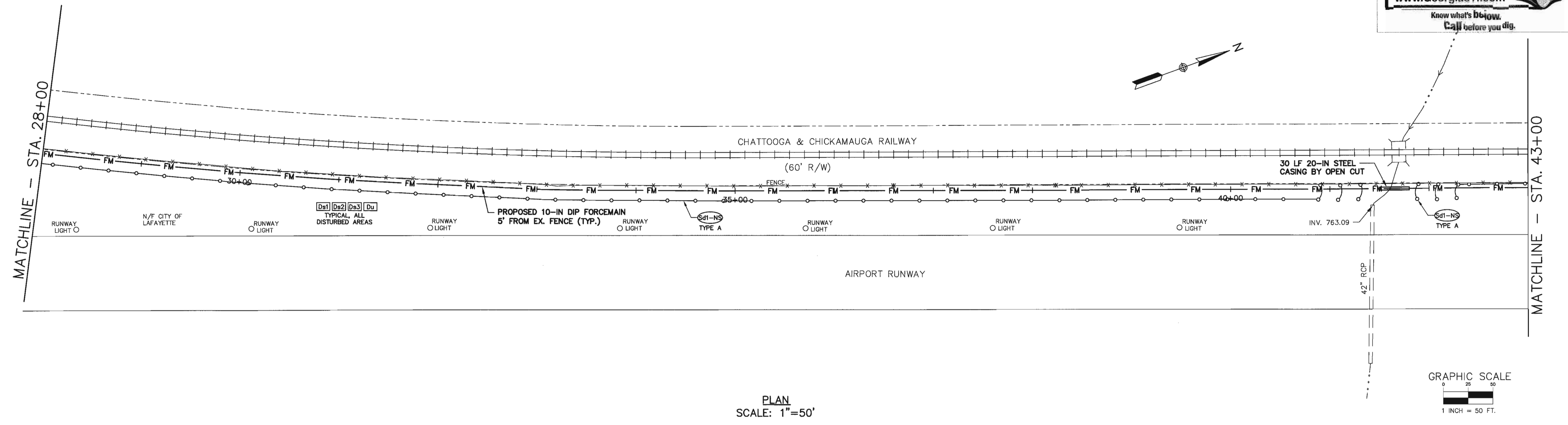
SWEITZER ENGINEERING, INC.
CONSULTING ENGINEERS
680 Douthit Ferry Rd, Suite 105
Cartersville, Georgia 30120
678-569-4290 - Phone



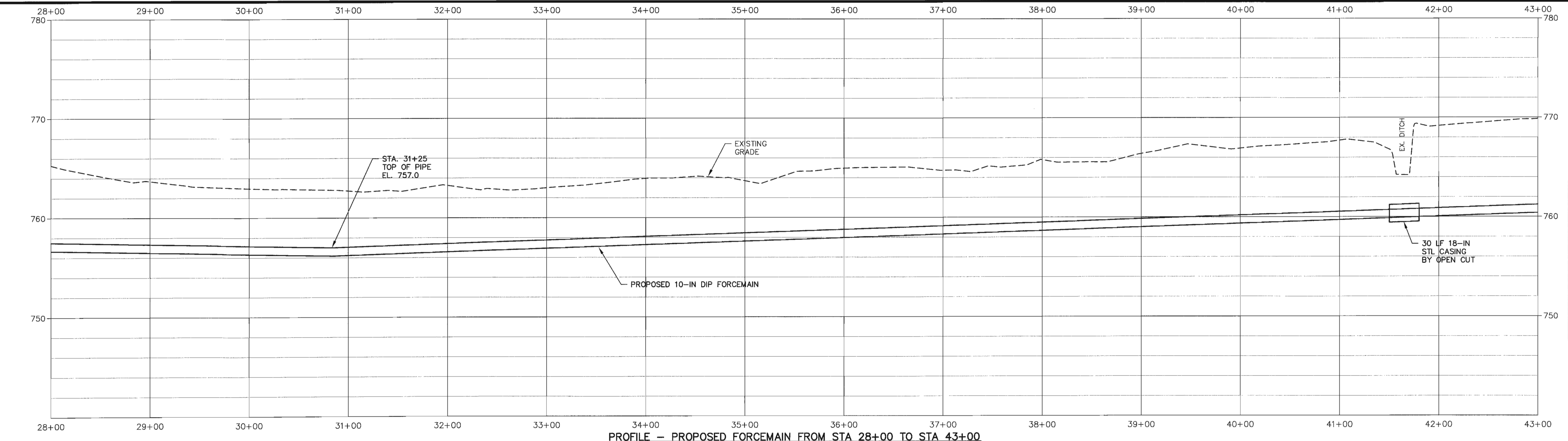
CITY OF LAFAYETTE, GEORGIA
SHATTUCK INDUSTRIAL BLVD
FORCEMAIN REPLACEMENT

SHEET TITLE
PLAN & PROFILE

DATE: AUGUST 10, 2017
SHEET
05
SEQUENCE 05 OF 14
PROJECT NO. 126-143.40



PLAN
SCALE: 1"=50'



PROFILE - PROPOSED FORCEMAIN FROM STA 28+00 TO STA 43+00
SCALE: 1" = 50' (HORIZ.)
1" = 5' (VERT.)

T:\126 LAFAYETTE PROJECTS\143 Forcemain\143 CIVIL SHEETS.dwg
Saved: August 22, 2017 8:18 AM
Plotted: August 24, 2017 1:25 PM

©SWEITZER ENGINEERING, INC. 2017

NO.	DATE	ISSUED FOR	BY

THE SCALE BAR SHOWN BELOW MEASURES ONE INCH LONG ON THE ORIGINAL DRAWING.

DESIGNED: JWC
DRAWN: SHS
CHECKED: JHS

SWEITZER ENGINEERING, INC.
CONSULTING ENGINEERS
680 Douthit Ferry Rd, Suite 105
Cartersville, Georgia 30120
678-569-4290 - Phone

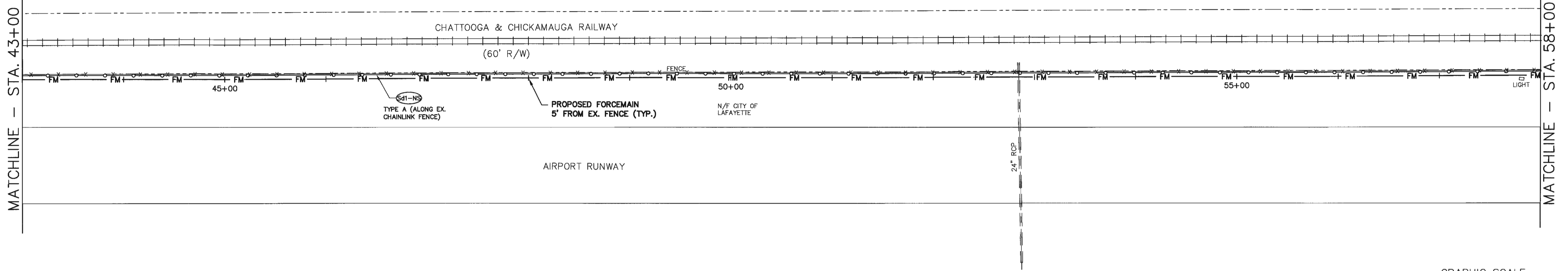
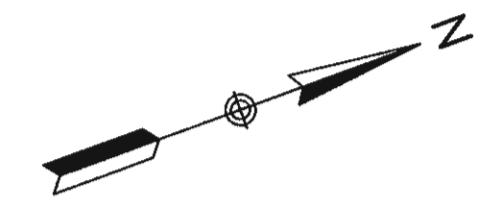


CITY OF LAFAYETTE, GEORGIA
SHATTUCK INDUSTRIAL BLVD
FORCEMAIN REPLACEMENT

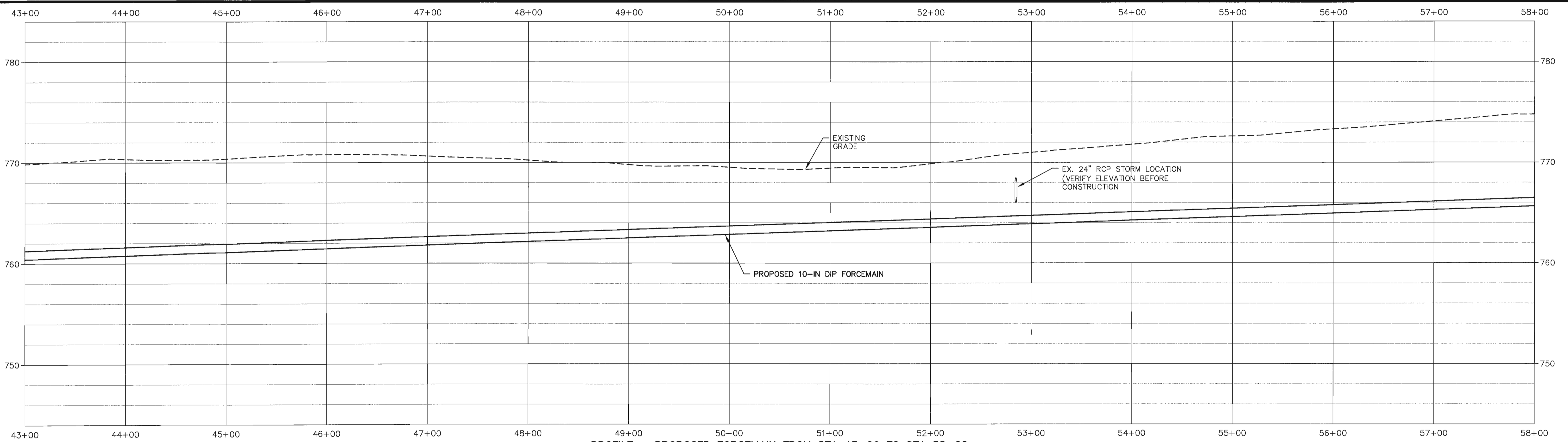
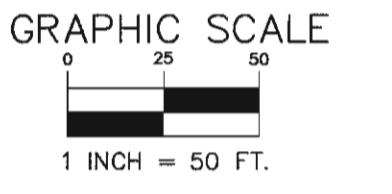
SHEET TITLE

PLAN & PROFILE

DATE: AUGUST 10, 2017
SHEET
06
SEQUENCE 06 OF 14
PROJECT NO. 126-143.40



PLAN
SCALE: 1"=50'



PROFILE -- PROPOSED FORCEMAIN FROM STA 43+00 TO STA 58+00
SCALE: 1" = 50' (HORIZ.)
1" = 5' (VERT.)

T:\126 LAFAYETTE\PROJECTS\143 Forcemain\143 CIVIL SHEETS.dwg
Saved: August 22, 2017 8:18 AM
Plotted: August 24, 2017 1:26 PM

©SWEITZER ENGINEERING, INC. 2017

NO.	DATE	ISSUED FOR	BY

THE SCALE BAR SHOWN BELOW MEASURES ONE INCH LONG ON THE ORIGINAL DRAWING.

DESIGNED: JWC
DRAWN: SHS
CHECKED: JHS

SWEITZER ENGINEERING, INC.
CONSULTING ENGINEERS
680 Douthit Ferry Rd, Suite 105
Cartersville, Georgia 30120
678-569-4290 - Phone



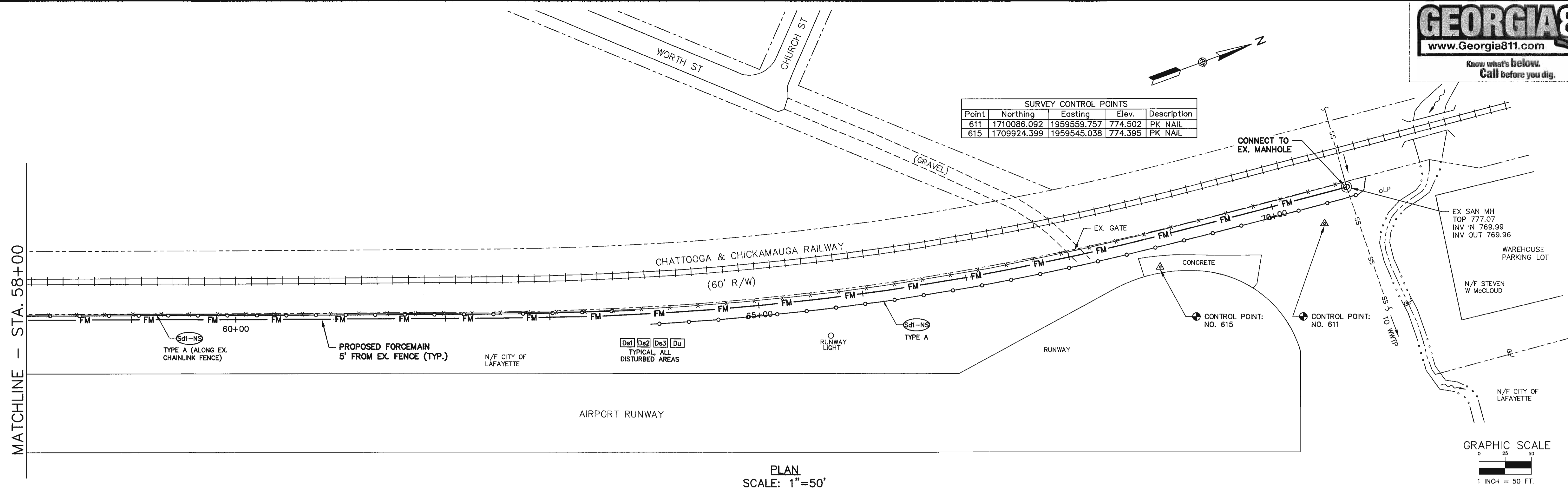
CITY OF LAFAYETTE, GEORGIA
SHATTUCK INDUSTRIAL BLVD
FORCEMAIN REPLACEMENT

SHEET TITLE

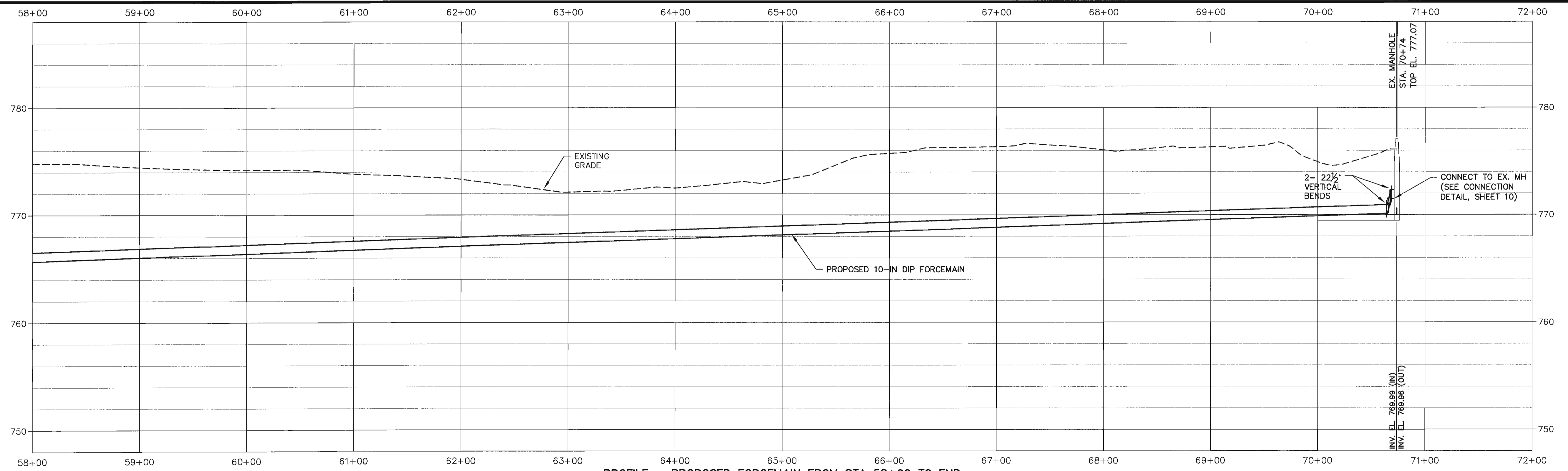
PLAN & PROFILE

DATE: AUGUST 10, 2017
SHEET
07
SEQUENCE 07 OF 14
PROJECT NO. 126-143.40

Point	Northing	Easting	Elev.	Description
611	1710086.092	1959559.757	774.502	PK NAIL
615	1709924.399	1959545.038	774.395	PK NAIL



PLAN
SCALE: 1"=50'



PROFILE - PROPOSED FORCEMAIN FROM STA 58+00 TO END
SCALE: 1" = 50' (HORIZ.)
1" = 5' (VERT.)

T:\126 LAFAYETTE\PROJECTS\143 Forcmain\143 CIVIL SHEETS.dwg
Saved: August 22, 2017 8:18 AM
Plotted: August 24, 2017 1:26 PM

©SWEITZER ENGINEERING, INC. 2017

NO.	DATE	ISSUED FOR	BY

THE SCALE BAR SHOWN BELOW MEASURES ONE INCH LONG ON THE ORIGINAL DRAWING.

DESIGNED: JWC
DRAWN: SHS
CHECKED: JHS

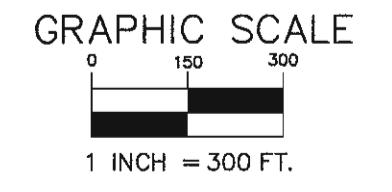
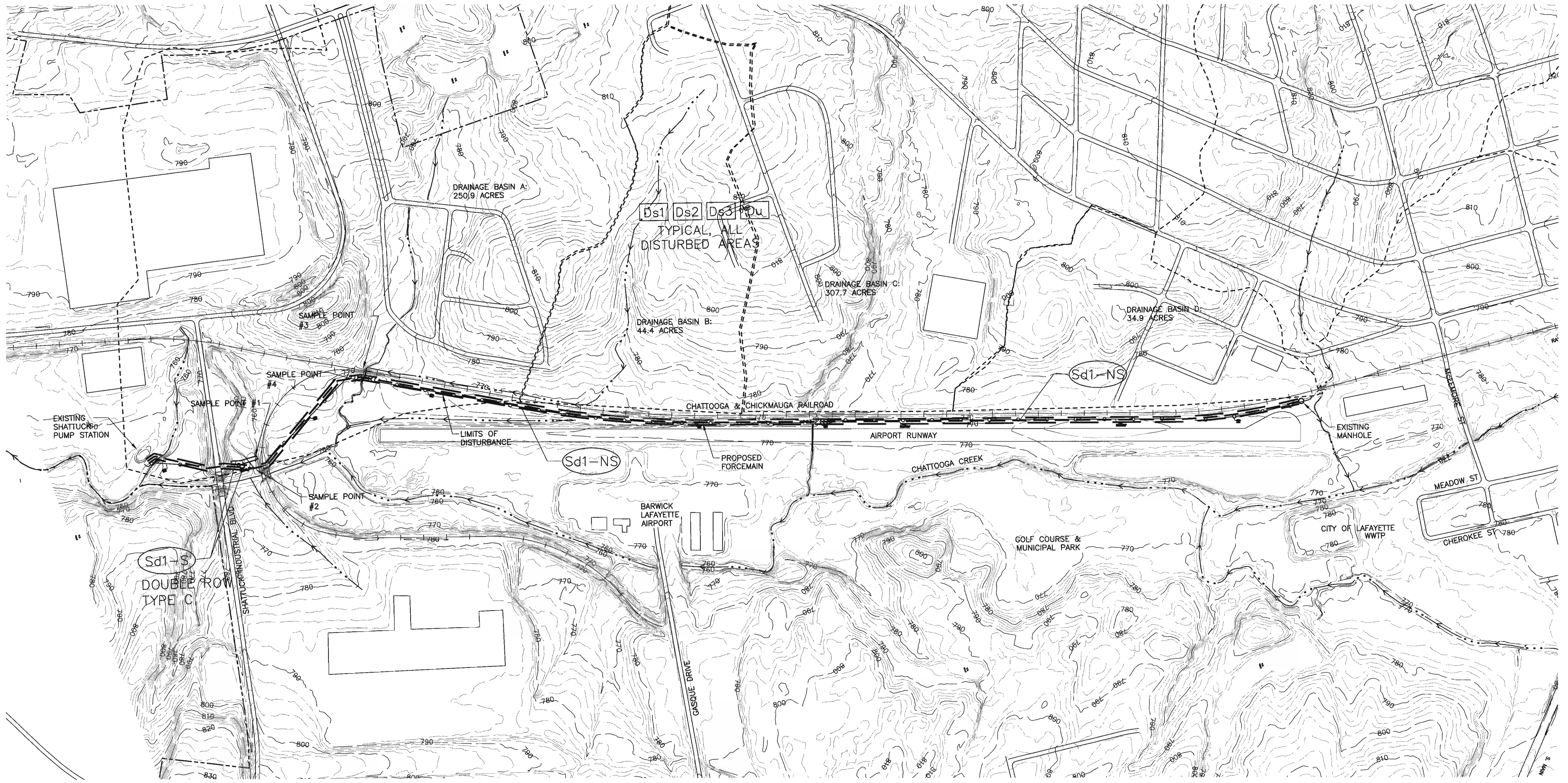
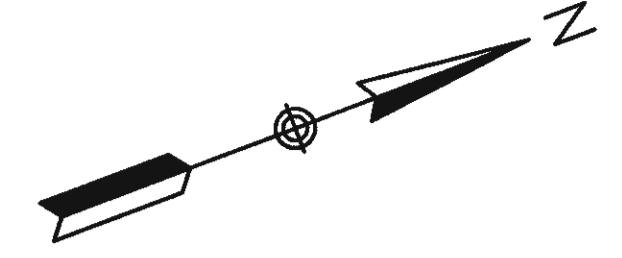
SWEITZER ENGINEERING, INC.
CONSULTING ENGINEERS
680 Douthit Ferry Rd, Suite 105
Cartersville, Georgia 30120
678-569-4290 - Phone



CITY OF LAFAYETTE, GEORGIA
SHATTUCK INDUSTRIAL BLVD
FORCEMAIN REPLACEMENT

SHEET TITLE
PLAN & PROFILE

DATE: AUGUST 10, 2017
SHEET
08
SEQUENCE 08 OF 14
PROJECT NO. 126-143.40



T:\126 LAFAYETTE\PROJECTS\143 Forcemain\143 EROSION SHEETS.dwg
Saved: August 24, 2017 1:10 PM
Plotted: August 24, 2017 1:15 PM

© SWEITZER ENGINEERING, INC. 2017

NO.	DATE	ISSUED FOR	BY

THE SCALE BAR SHOWN BELOW MEASURES ONE INCH LONG ON THE ORIGINAL DRAWING.

DESIGNED: JHS
DRAWN: SHS
CHECKED: JHS

SWEITZER ENGINEERING, INC.
CONSULTING ENGINEERS
680 Douthit Ferry Rd, Suite 105
Cartersville, Georgia 30120
678-569-4290 - Phone



CITY OF LAFAYETTE, GEORGIA
SHATTUCK INDUSTRIAL BLVD
FORCEMAIN REPLACEMENT

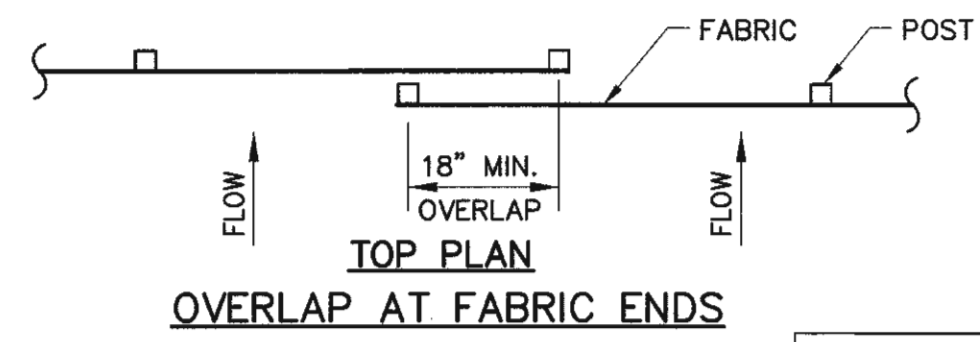
SHEET TITLE

EROSION & SEDIMENT CONTROL PLAN MAP

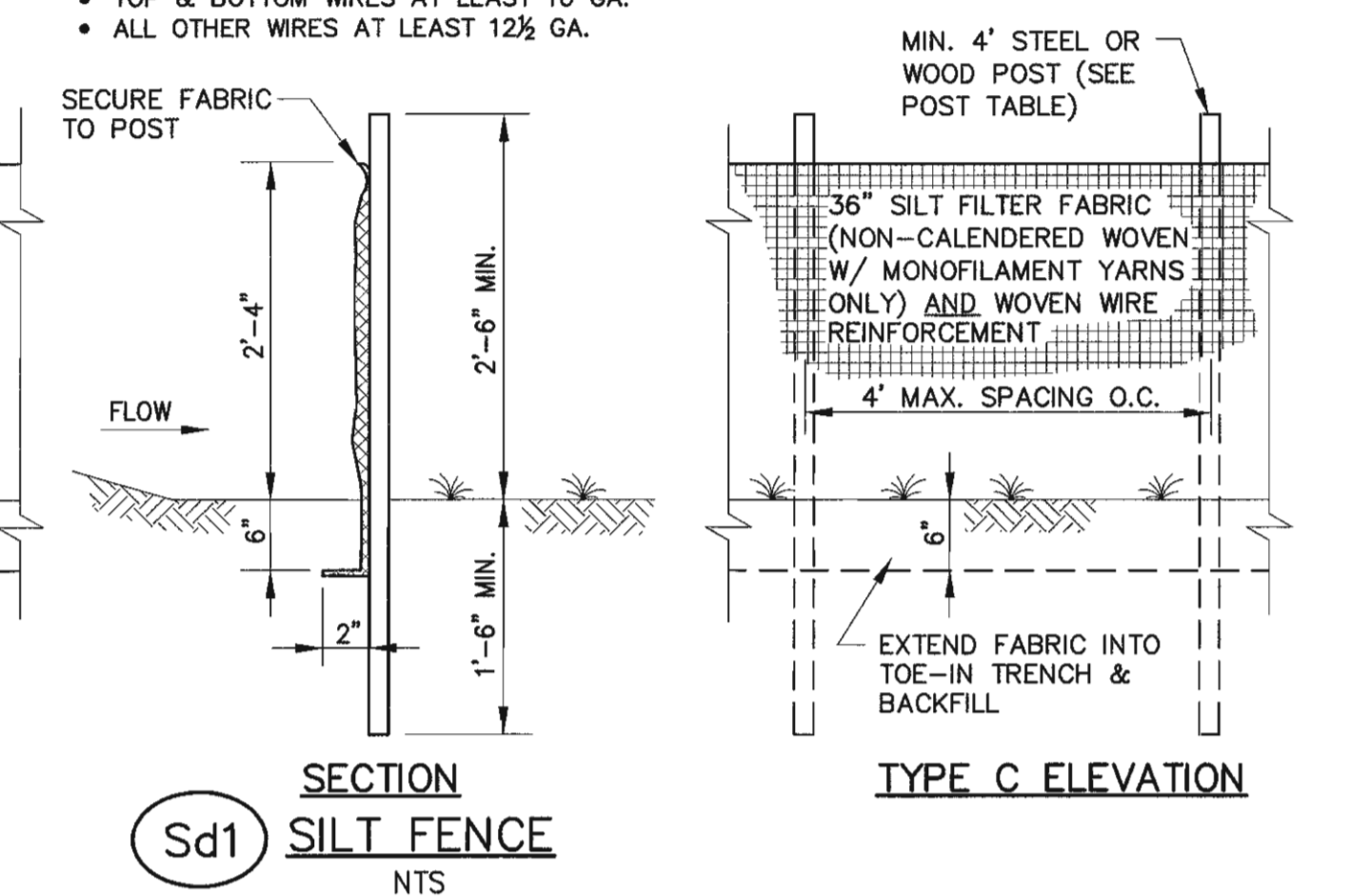
DATE: AUGUST 10, 2017
SHEET
11
SEQUENCE 11 OF 14
PROJECT NO. 126-143

SILT FENCE POST			
TYPE	MIN. LENGTH	POST MATERIAL	POST SIZE
Sd1-NS	4'	SOFT WOOD	3" DIA. OR 2"x4"
		OAK	1.5"x1.5"
Sd1-S	4'	OAK	1.15 LBS/FT MIN.
		STEEL	2"x2"

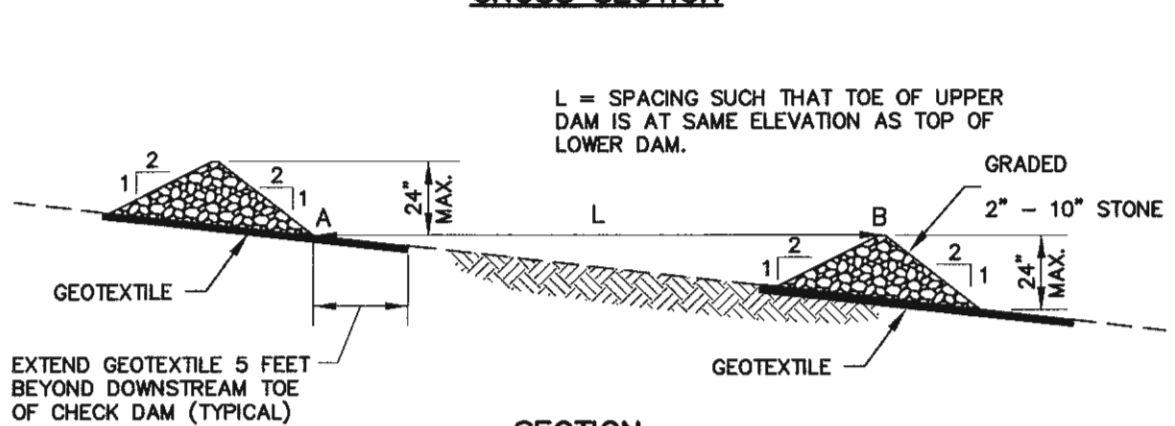
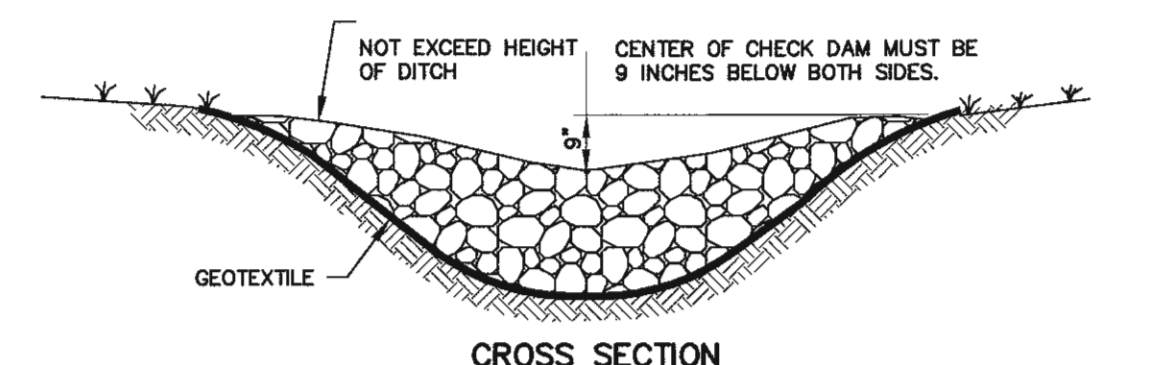
FASTENER FOR WOOD POSTS			
	GAUGE	SIZE	QTY/POST
WIRE STAPLES	17 GA. MIN.	3/4"W x 1/2"L	5 MIN.
BUTTON HEAD NAILS	14 GA. MIN.	3/4"Ø HEAD x 1"L	4 MIN.



SILT FENCE FABRIC		
	TYPE A	TYPE C
TENSILE STRENGTH (MIN. LBS)	WARP-120 FILL-100	WARP-260 FILL-180
ELONGATION (MAX. %)	40	40
MAX. SIEVE SIZE	NO. 30	NO. 30
FLOW RATE (GAL/MIN/SQ FT)	25	70
BURSTING STRENGTH (MIN. PSI)	175	175



Sd1 SILT FENCE
NTS

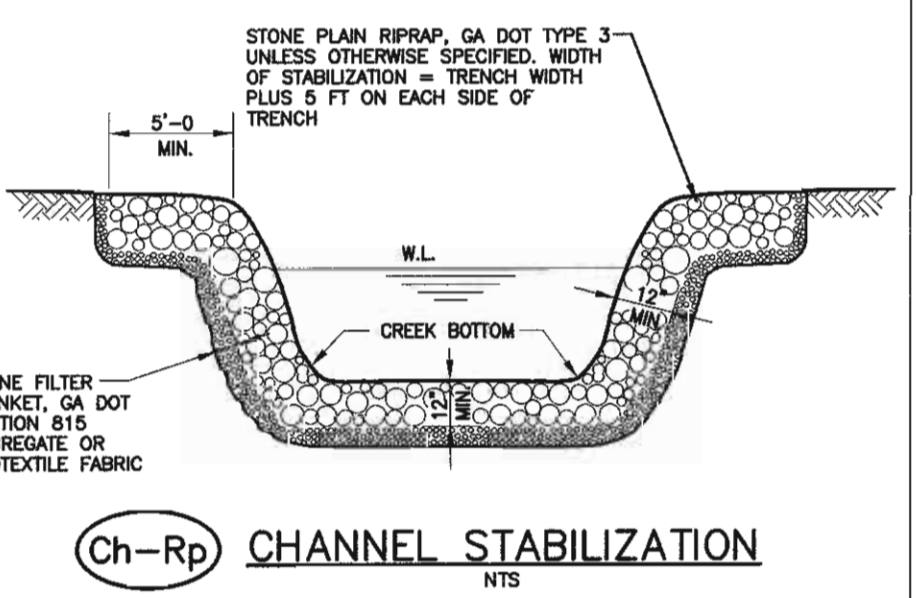


- NOTES:**
- A AND B ARE OF EQUAL ELEVATION.
 - LOCATE ADJACENT CHECK DAMS PER THE SPACING REQUIREMENTS OF THIS DETAIL.
 - CLEAN TRAP OUT WHEN SEDIMENT REACHES ONE-HALF OF THE ORIGINAL CHECK DAM HEIGHT.
 - AFTER CHECK DAM REMOVAL, RESEED AND MULCH THE DISTURBED AREA.

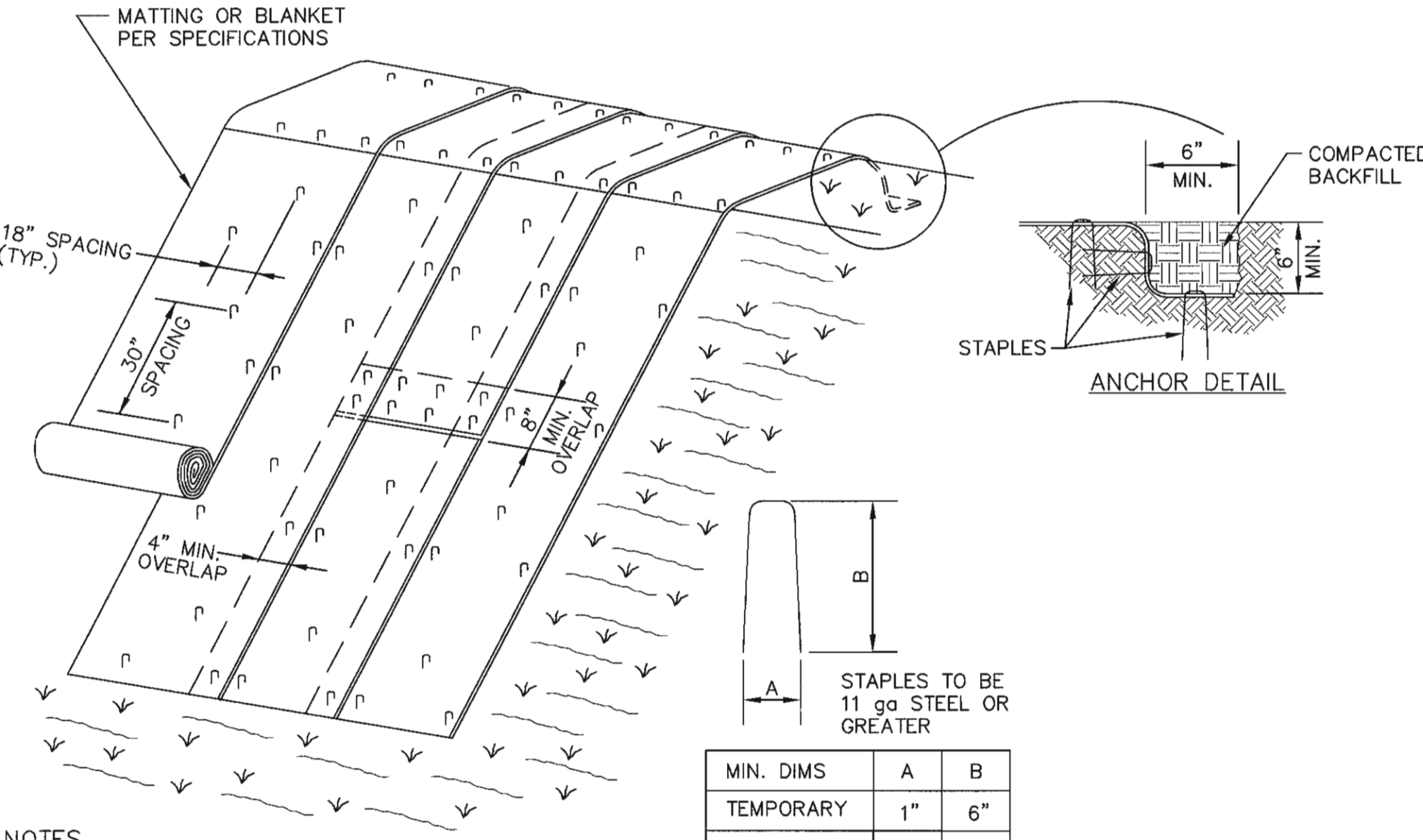
Cd-S STONE CHECKDAM
NTS
(FOR 2 ACRE OR SMALLER DRAINAGE AREA)

- GENERAL NOTES**
- PERSONS USING THIS DRAWING SHALL MAKE THEIR OWN DETERMINATION OF THE LOCATION, DEPTH, AND DESCRIPTION OF UNDERGROUND AND OVERHEAD UTILITIES. THE UTILITY INFORMATION SHOWN HEREON WAS OBTAINED FROM READILY AVAILABLE SOURCES, BUT IT MAY NOT BE ACCURATE OR COMPLETE. EXCAVATION OR ELECTRONIC DETECTION METHODS WERE NOT USED TO VERIFY THE INFORMATION.
 - CALL UTILITIES BEFORE BEGINNING ANY CONSTRUCTION OR EXCAVATIONS TO HAVE UNDERGROUND UTILITIES FIELD STAKED.

GSWCC Georgia Soil and Water Conservation Commission
Trent R Lard
Level II Certified Design Professional
CERTIFICATION NUMBER: 0000045293
ISSUED: 09/01/2015 EXPIRES: 09/01/2018



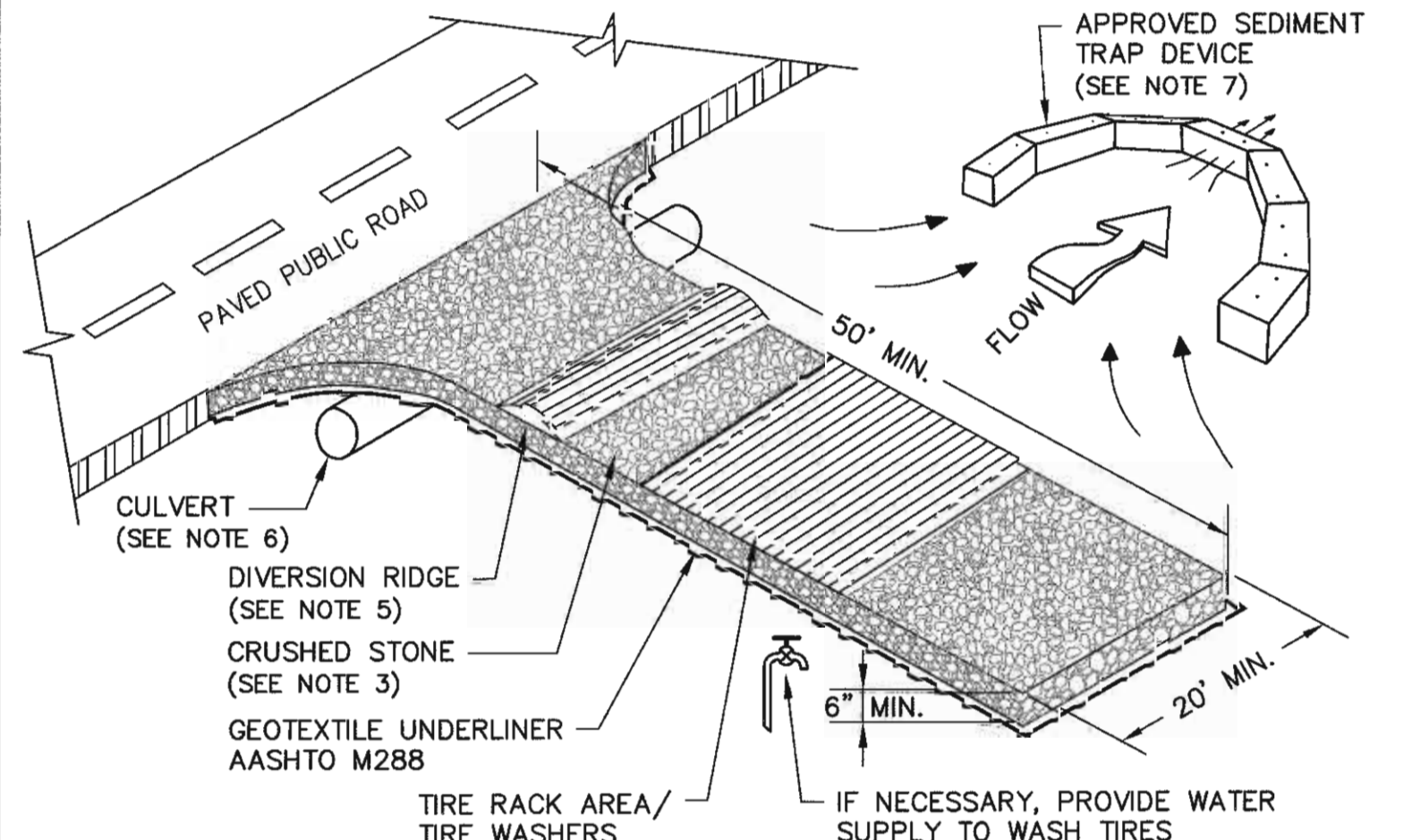
Ch-Rp CHANNEL STABILIZATION
NTS



- NOTES**
- DRAWING HEREON IS TYPICAL MINIMUM INSTALLATION GUIDELINES. FOLLOW MATTING MANUFACTURER'S INSTALLATION RECOMMENDATIONS.
 - FOR TEMPORARY SLOPE BLANKET: APPLY LIME, FERTILIZER & SEED AFTER FINAL GRADING AND PRIOR TO BLANKET INSTALLATION.
 - FOR PERMANENT SLOPE MATTING: APPLY LIME & FERTILIZER AFTER FINAL GRADING AND PRIOR TO MATTING INSTALLATION. AFTER INSTALLATION AND SOIL FILLING IN MATS, GRASS ENTIRE MATTING AREA.

Ss EROSION CONTROL SLOPE STABILIZATION
NTS

MIN. DIMS	A	B
TEMPORARY	1"	6"
PERMANENT	2"	8"



- NOTES:**
- LOCATE STONE STABILIZED PAD AT ANY POINT WHERE VEHICULAR TRAFFIC WILL BE LEAVING THE CONSTRUCTION SITE ONTO A PUBLIC PAVED STREET, ROADWAY, OR PARKING AREA. AVOID LOCATING ON STEEP SLOPES OR AT CURVES ON PUBLIC ROADS.
 - REMOVE ALL VEGETATION AND OTHER UNSUITABLE MATERIAL FROM THE FOUNDATION AREA, GRADE, AND CROWN FOR POSITIVE DRAINAGE.
 - COARSE AGGREGATE SHALL BE NATIONAL STONE ASSOC. R-2 (1.5"-3.5" CRUSHED STONE). CRUSHED STONE PAD SHALL HAVE A MINIMUM THICKNESS OF 6"
 - PAD WIDTH SHALL BE EQUAL FULL WIDTH AT ALL POINTS OF VEHICULAR EGRESS, BUT NO LESS THAN 20'.
 - A DIVERSION RIDGE SHOULD BE CONSTRUCTED WHEN GRADE TOWARD PAVED AREA IS GREATER THAN 2%.
 - INSTALL PIPE UNDER THE ENTRANCE IF NEEDED TO MAINTAIN DRAINAGE DITCHES.
 - WASH TIRES TO REMOVE MUD PRIOR TO ENTRANCE ONTO PUBLIC ROADS. WHEN WASHING IS REQUIRED, DO SO ON AREAS STABILIZED WITH CRUSHED STONE DRAINING INTO AN APPROVED SEDIMENT TRAP OR SEDIMENT BASIN.
 - WASHRACKS AND/OR TIRE WASHERS MAY BE REQUIRED DEPENDING ON SCALE AND CIRCUMSTANCE. IF NECESSARY, WASHRACK DESIGN MAY CONSIST OF ANY MATERIAL SUITABLE FOR TRUCK TRAFFIC THAT REMOVES MUD AND DIRT.
 - MAINTAIN THE EXIT TO PREVENT TRACKING OR FLOW OF MUD ONTO PUBLIC ROADS. PROVIDE PERIODIC TOP DRESSING WITH 1.5 - 3.5" STONE, AS CONDITIONS DEMAND. IMMEDIATELY REMOVE ALL MATERIALS SPILLED, DROPPED, WASHED, OR TRACKED FROM VEHICLE OR SITE ONTO ROADWAY OR INTO STORM DRAINS.

Co TEMPORARY CONSTRUCTION EXIT
NTS

Ds1 Ds2 Ds3 VEGETATIVE STABILIZATION

- APPLY MULCH OR TEMPORARY GRASSING TO ALL EXPOSED AREAS WITHIN 7 DAYS OF DISTURBANCE.
- WITHIN 7 DAYS, APPLY TEMPORARY GRASSING TO ALL EXPOSED AREAS EXPECTED TO BE UNFINISHED FOR LESS THAN 6 MONTHS.
- APPLY PERMANENT GRASSING TO ALL DISTURBED AREAS EXPECTED TO BE UNFINISHED FOR MORE THAN 6 MONTHS.
- A. TEMPORARY GRASSING**
LIME: APPLY AGRICULTURAL LIME AT RATE OF ONE TON PER ACRE.
FERTILIZER: APPLY 6:12:12 (OR EQUIVALENT) AT RATE OF 1500 POUNDS PER ACRE.
SEEDING: SELECT GRASS SEED OR GRASS/LEGUME MIXTURE, SUITABLE TO THE SEASON, FROM THE CHART BELOW.
- B. PERMANENT GRASSING**
LIME AND FERTILIZER APPLICATION: PER SPECIFICATIONS IN THE MANUAL FOR Ds3
MULCH: DRY STRAW OR HAY AT 2 TONS PER ACRE.
SEEDING: SELECT GRASS SEED OR GRASS/LEGUME MIXTURE SUITABLE TO THE SEASON FROM THE CHART BELOW.
- C. MAINTENANCE**
PREPARATION, IRRIGATION, TOPDRESSING, FUTURE FERTILIZER/LIME, APPLICATION, AND MOWING PER SPECIFICATIONS IN THE MANUAL FOR Ds2 AND Ds3

SEEDING CHART					
MONTH	TEMPORARY SEED	RATE (PER ACRE)	PERMANENT SEED	RATE (PER ACRE)	
JANUARY	ANNUAL RYEGRASS	40 lbs.	WILMINGTON BAHIA SERICEA LESPEDEZA (SCARIFIED)	30 lbs. 75 lbs.	
FEBRUARY	ANNUAL RYEGRASS	40 lbs.	SERICEA LESPEDEZA (SCARIFIED) WILMINGTON BAHIA	75 lbs. 30 lbs.	
MARCH	ANNUAL RYEGRASS	40 lbs.	SERICEA LESPEDEZA (SCARIFIED) TALL FESCUE	75 lbs. 30 lbs.	
APRIL	ANNUAL RYEGRASS	40 lbs.	SERICEA LESPEDEZA (SCARIFIED) WILMINGTON BAHIA	75 lbs. 30 lbs.	
MAY	BROWN TOP MILLET	10 lbs.	SERICEA LESPEDEZA (SCARIFIED) WILMINGTON BAHIA	75 lbs. 30 lbs.	
JUNE	BROWN TOP MILLET	10 lbs.	SERICEA LESPEDEZA (SCARIFIED) WILMINGTON BAHIA	75 lbs. 30 lbs.	
JULY	SUDANGRASS	10 lbs.	SERICEA LESPEDEZA (SCARIFIED) WILMINGTON BAHIA	75 lbs. 30 lbs.	
AUGUST	RYE	3 BU. (168 lbs.)	SERICEA LESPEDEZA (SCARIFIED) WILMINGTON BAHIA	75 lbs. 30 lbs.	
SEPTEMBER	RYE	3 BU. (168 lbs.)	SERICEA LESPEDEZA (SCARIFIED) WILMINGTON BAHIA	75 lbs. 30 lbs.	
OCTOBER	RYE	1/2 BU. (28 lbs.)	SERICEA LESPEDEZA (SCARIFIED) WILMINGTON BAHIA	75 lbs. 30 lbs.	
NOVEMBER	WHEAT	1/2 BU. (30 lbs.)	SERICEA LESPEDEZA (SCARIFIED) WILMINGTON BAHIA	75 lbs. 30 lbs.	
DECEMBER	ANNUAL RYE GRASS	40 lbs.	SERICEA LESPEDEZA (SCARIFIED) WILMINGTON BAHIA	75 lbs. 30 lbs.	

T:\126 LAFAYETTE\PROJECTS\143 Forcemain\143 EROSION SHEETS.dwg
Saved: August 24, 2017 1:21 PM
Plotted: August 24, 2017 1:25 PM

© SWEITZER ENGINEERING, INC. 2017

NO.	DATE	ISSUED FOR	BY

DESIGNED: JHS
DRAWN: SHS
CHECKED: JHS

SWEITZER ENGINEERING, INC.
CONSULTING ENGINEERS
680 Douthitt Ferry Rd, Suite 105
Cartersville, Georgia 30120
678-569-4290 - Phone



CITY OF LAFAYETTE, GEORGIA
SHATTUCK INDUSTRIAL BLVD
FORCEMAIN REPLACEMENT

SHEET TITLE

EROSION & SEDIMENT CONTROL PLAN DETAILS

DATE: AUGUST 10, 2017
SHEET
13
SEQUENCE 13 OF 14
PROJECT NO. 126-143

